

WOOD, DESIGN & PEOPLE

in perfect
harmony

DESIGN

NOVATOP 



Wood tells its own story



Wood brings spaces to life with its natural beauty calming touch and awakens emotions from within



Family houses



SOLID, ACOUSTIC/ Marilyn 8/25

Prodesi / Domesi CZ





SOLID, ELEMENT, SWP

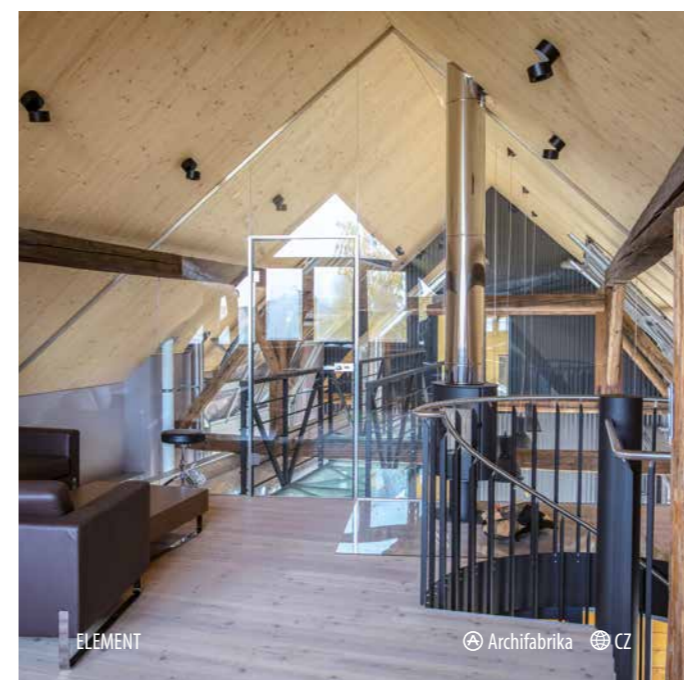
Prodesi / Domesi CZ





SOLID, ELEMENT, SWP

Ing. arch. Lukáš Pejsar CZ



ELEMENT

Archifabrika CZ



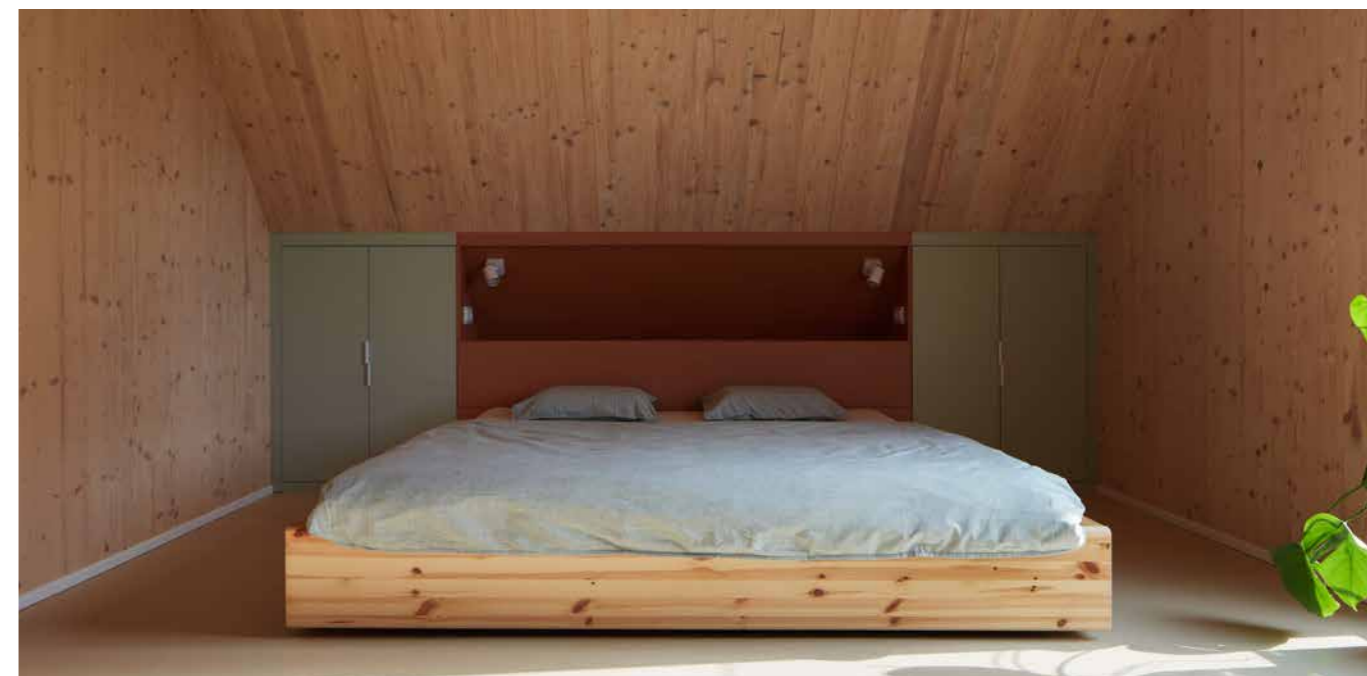
SOLID, ELEMENT, SWP

Lucia Kocmanova Studio CZ



SWP

Klar CZ





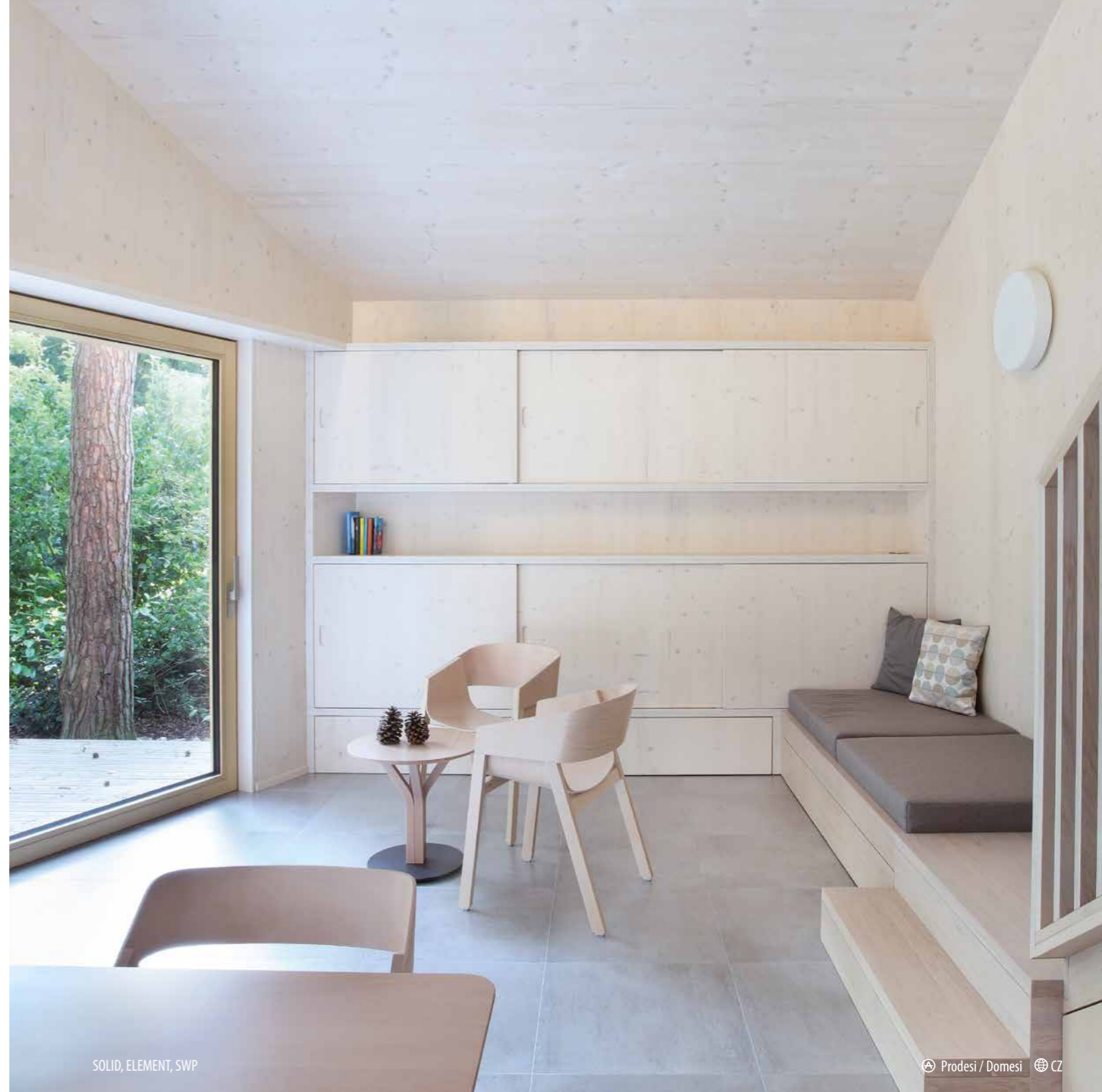
SOLID, SWP

SAMarchitekti CZ



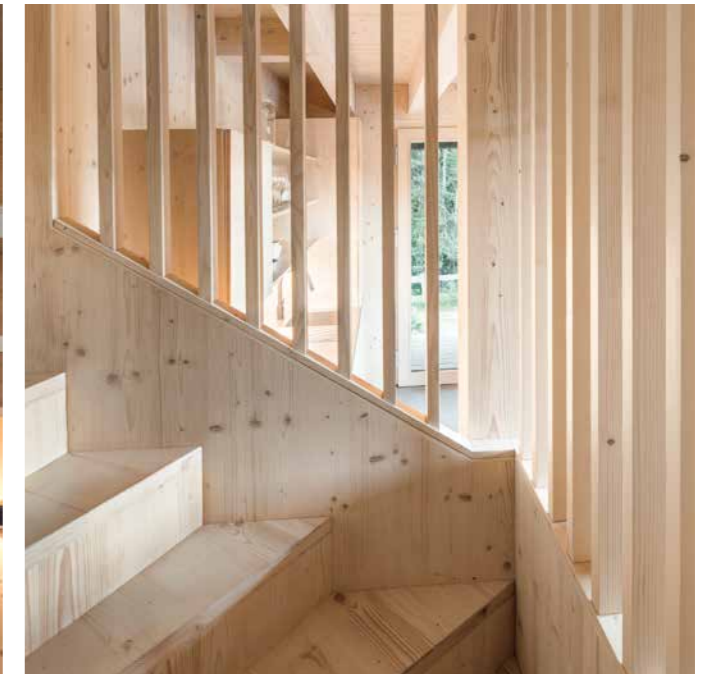
SOLID, SWP

SAMarchitekti CZ

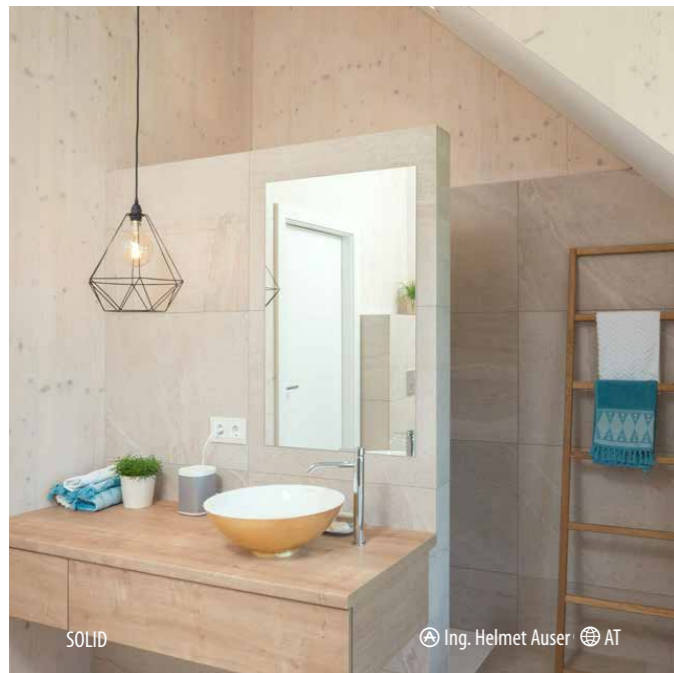


SOLID, ELEMENT, SWP

Prodesi / Domesi CZ



SOLID, SWP



SOLID

Ing. Helmet Auser AT



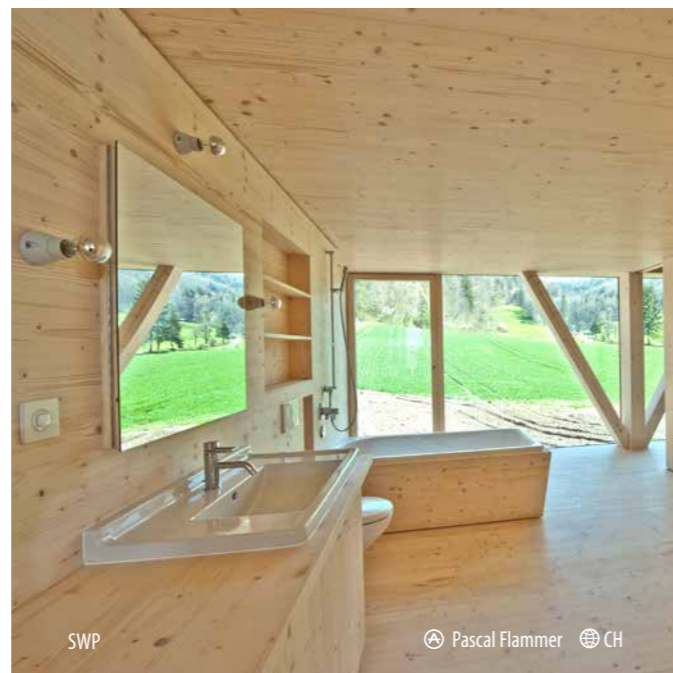
SOLID

XVstudio PL



SWP

PL



SWP

Pascal Flammer CH



SOLID, SWP

Lucia Kocmanova Studio CZ



OPEN

Helen & Hard N



OPEN

Helen & Hard N



SOLID, ELEMENT

BENC ARCHITECTES FR



SOLID, ELEMENT

CMCarchitects CZ



SOLID, OPEN, ACOUSTIC/Marilyne S1

Martin Sučan CZ



SOLID, OPEN

Ing. Arch. Aleš Makový CZ

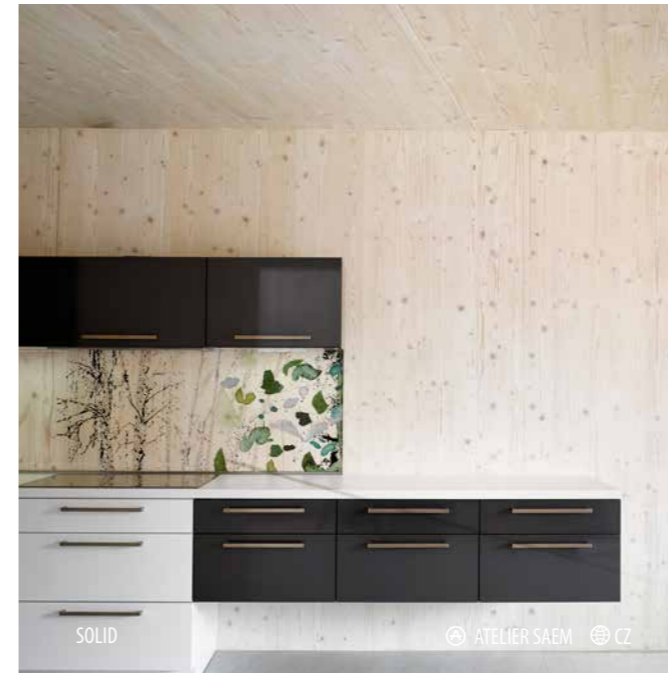


EASY BOARD



Adéla Kudrnová CZ







SWP

Tiny House Done CZ



SWP

Bayaya CZ



SWP

domkysrdcem.cz



SWP

Bayaya CZ



SWP, SOLID



IT



SWP



Tarje Lindahl



N



SWP

Oikos



HR



SOLID, ELEMENT

LIKO NOE



Ing. arch. Zdeněk Fránek



CZ

Wood connects
the harmony of nature
with modern design



Public buildings



Czech National Pavilion at EXPO 2025





SOLID, ACOUSTIC / Marilyne 8/25



SOLID, ELEMENT, SWP, ACOUSTIC / Marilyne 8/25



©BUDEX HUB s.r.o



ELEMENT

Häring AG NL



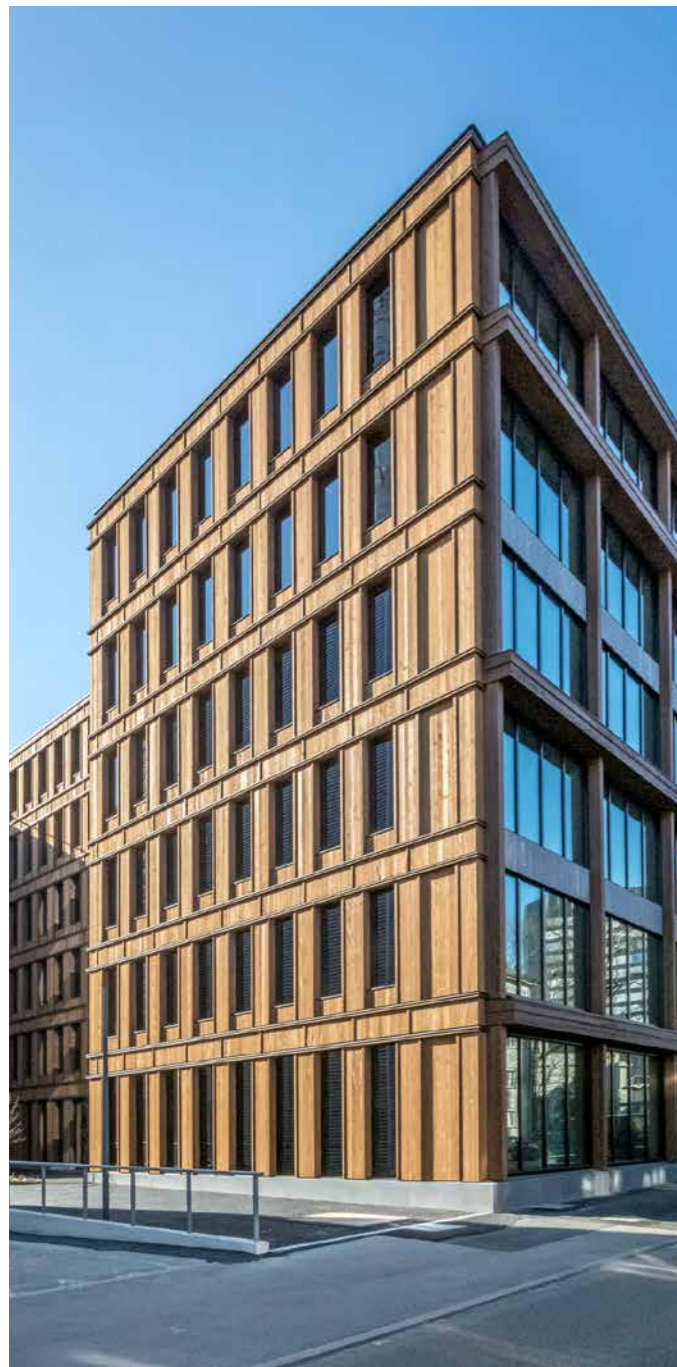
SOLID, ELEMENT

scop architectes 15 Ivry FR



SOLID

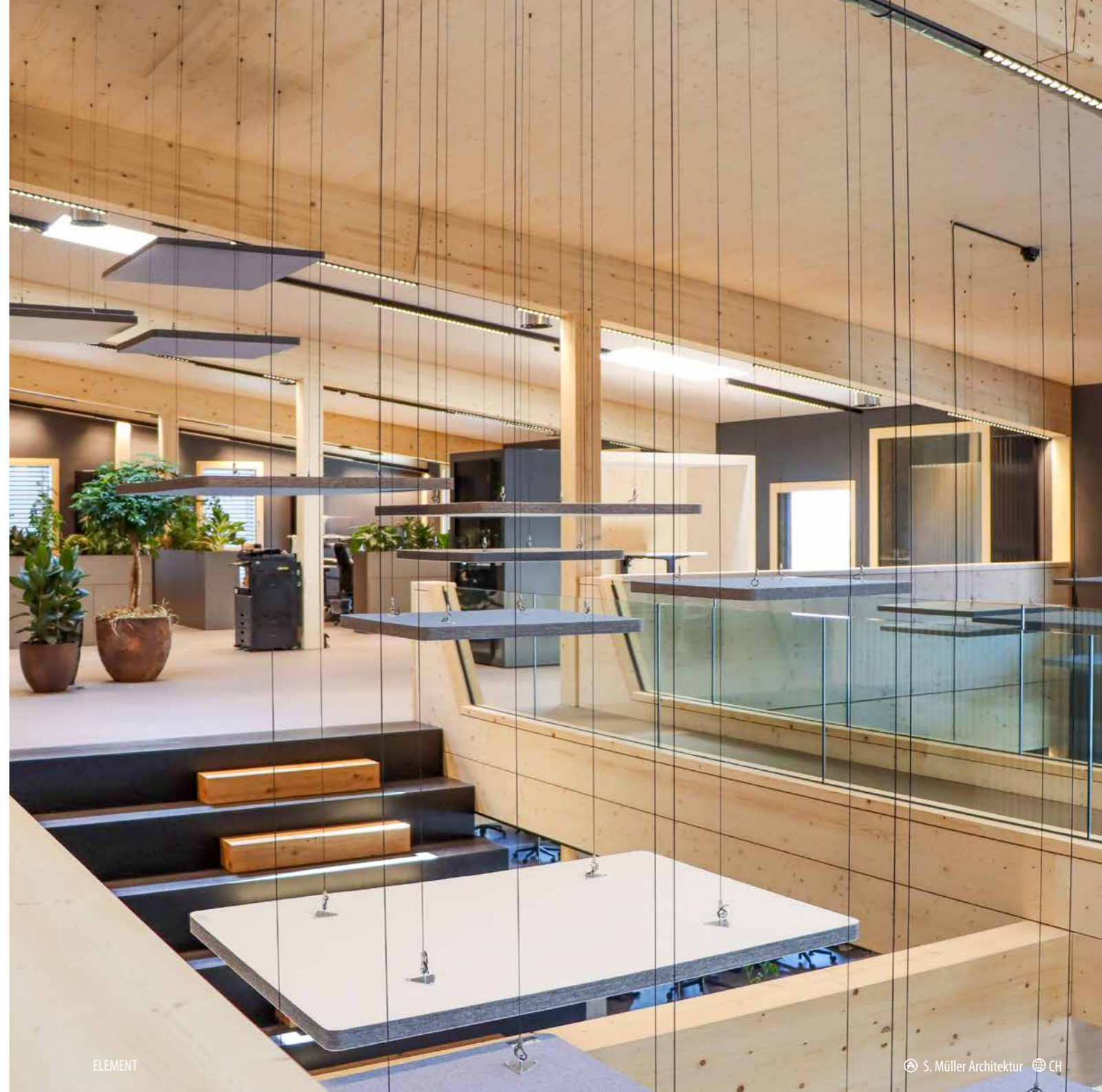
AER Architects FR



ELEMENT



© Schindler & Scheibling AG CH

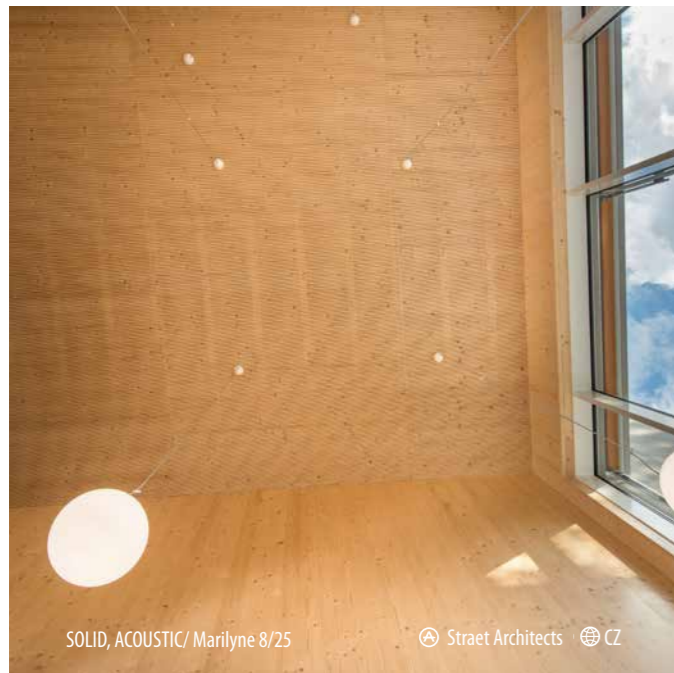


ELEMENT

© S. Müller Architektur CH

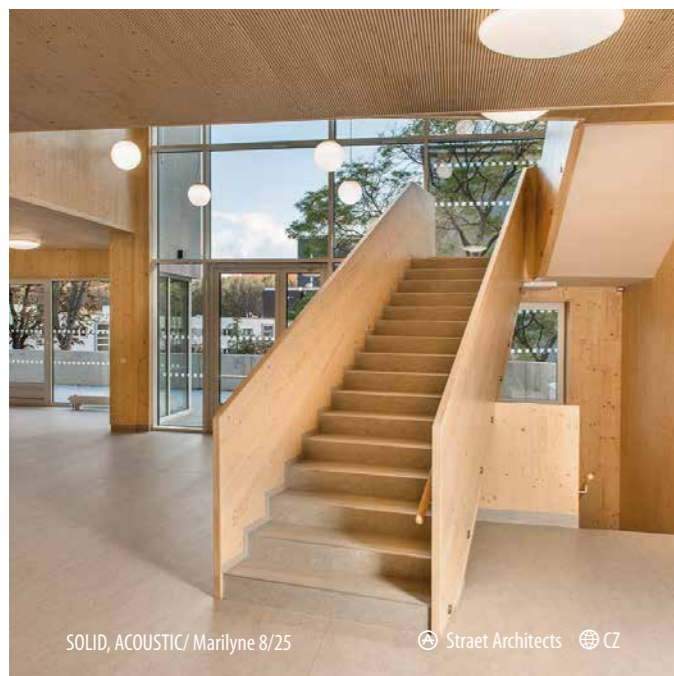


SOLID, ELEMENT, ACOUSTIC/ Lucy



SOLID, ACOUSTIC/ Marilyn 8/25

Ⓐ Straet Architects 🌐 CZ



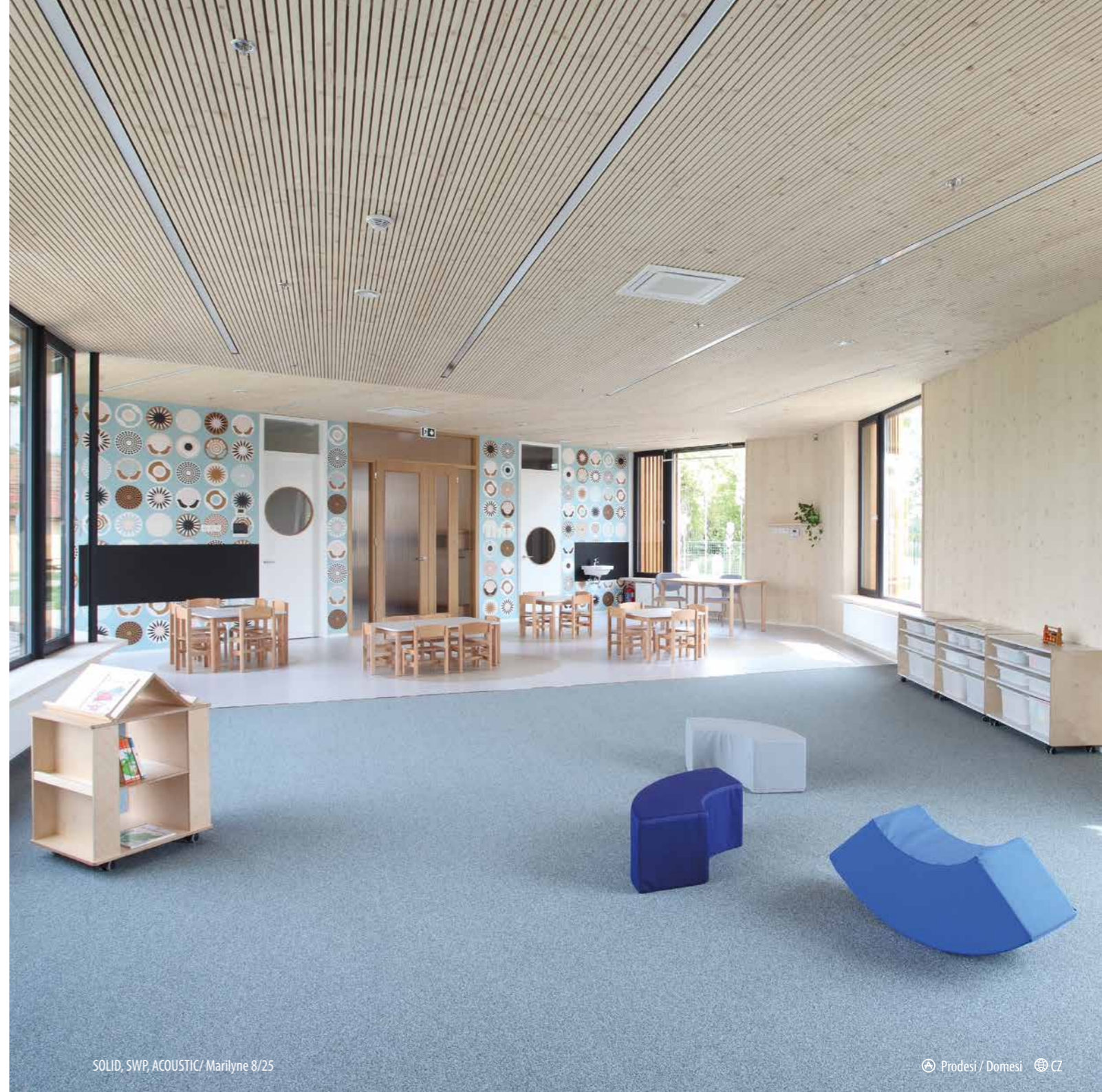
SOLID, ACOUSTIC/ Marilyn 8/25

Ⓐ Straet Architects 🌐 CZ



SWP

Ⓐ Prodesi / Domesi 🌐 CZ



SOLID, SWP, ACOUSTIC/ Marilyn 8/25

Ⓐ Prodesi / Domesi 🌐 CZ



ELEMENT, ACOUSTIC/ Suzanna

ATELIER SAEM CZ



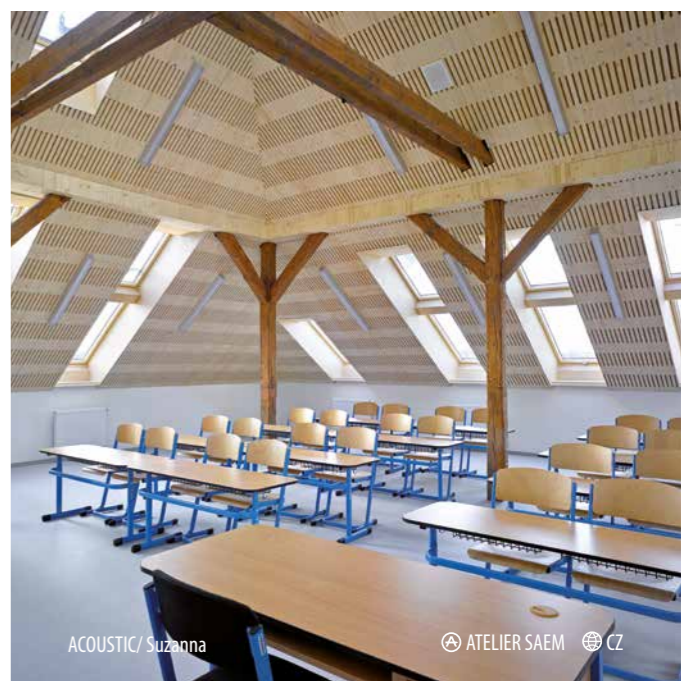
SWP, ACOUSTIC/ Marilynne 8/25

Ing. Arch. Miroslav Minca SK



ACOUSTIC/ Marilynne 8/25

Atelier CMJN CZ



ACOUSTIC/ Suzanna

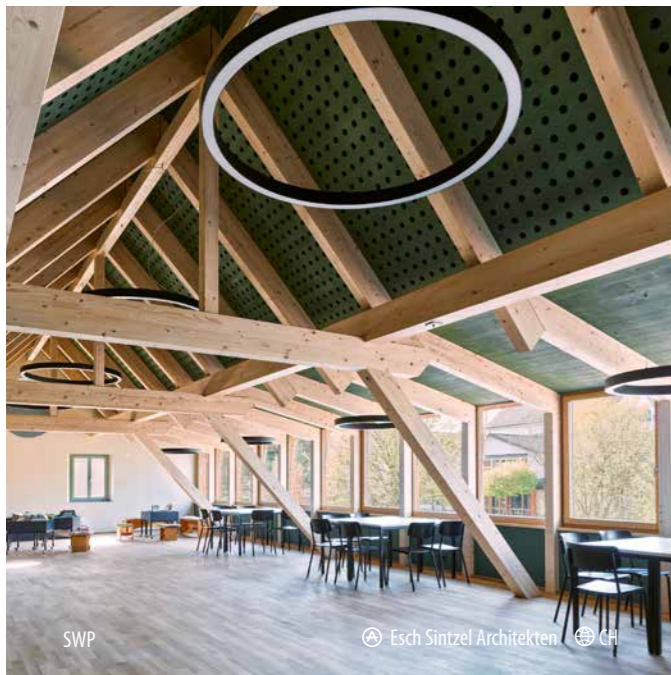
ATELIER SAEM CZ





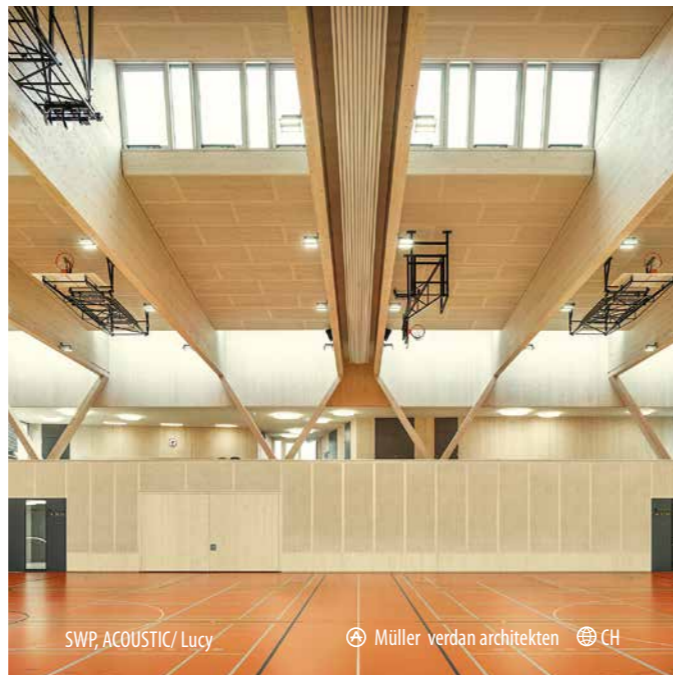
ACOUSTIC/ Marilyn 8/25

Atelier CMJN CZ



SWP

Esch Sintzel Architekten CH



SWP, ACOUSTIC/ Lucy

Müller verdan architekten CH



SWP, ACOUSTIC/ Marilyn 8/25

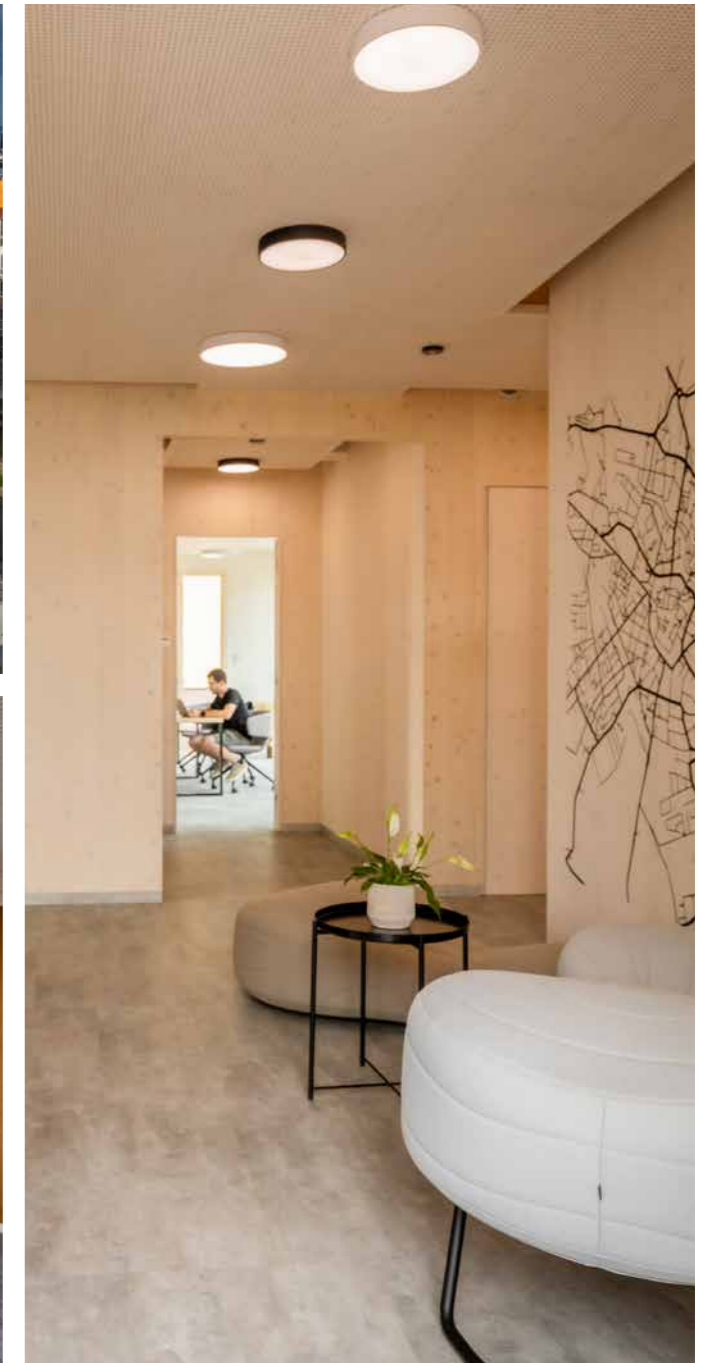
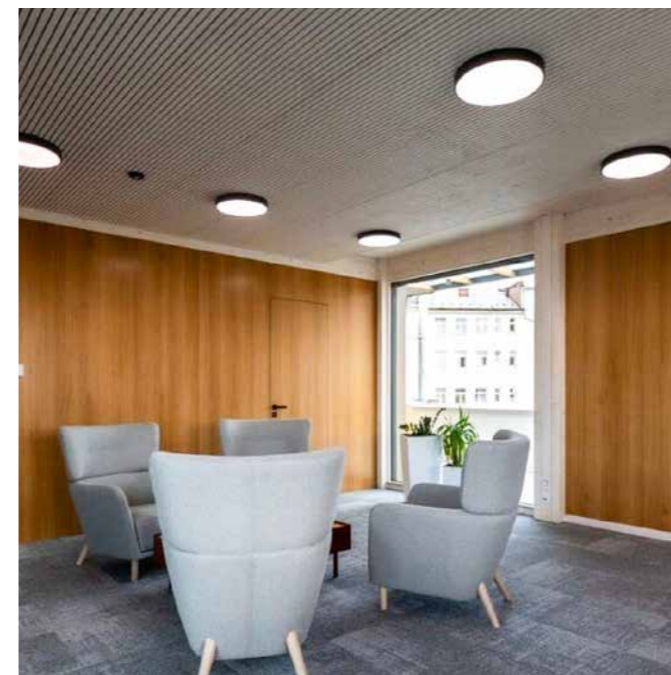
WMA architekti CZ



SWP

YKH Architects / Dong Hoon DOS KOR





SOLID, OPEN, ACOUSTIC, EASY BOARD



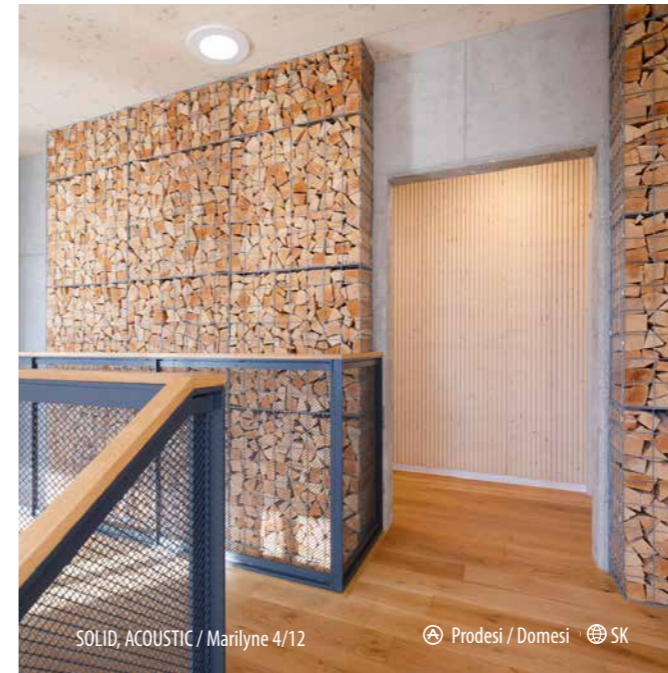
SOLID, ELEMENT, SWP





SOLID, ACOUSTIC / Marilynne 4/12

Prodesi / Domesi SK



SOLID, ACOUSTIC / Marilynne 4/12

Prodesi / Domesi SK



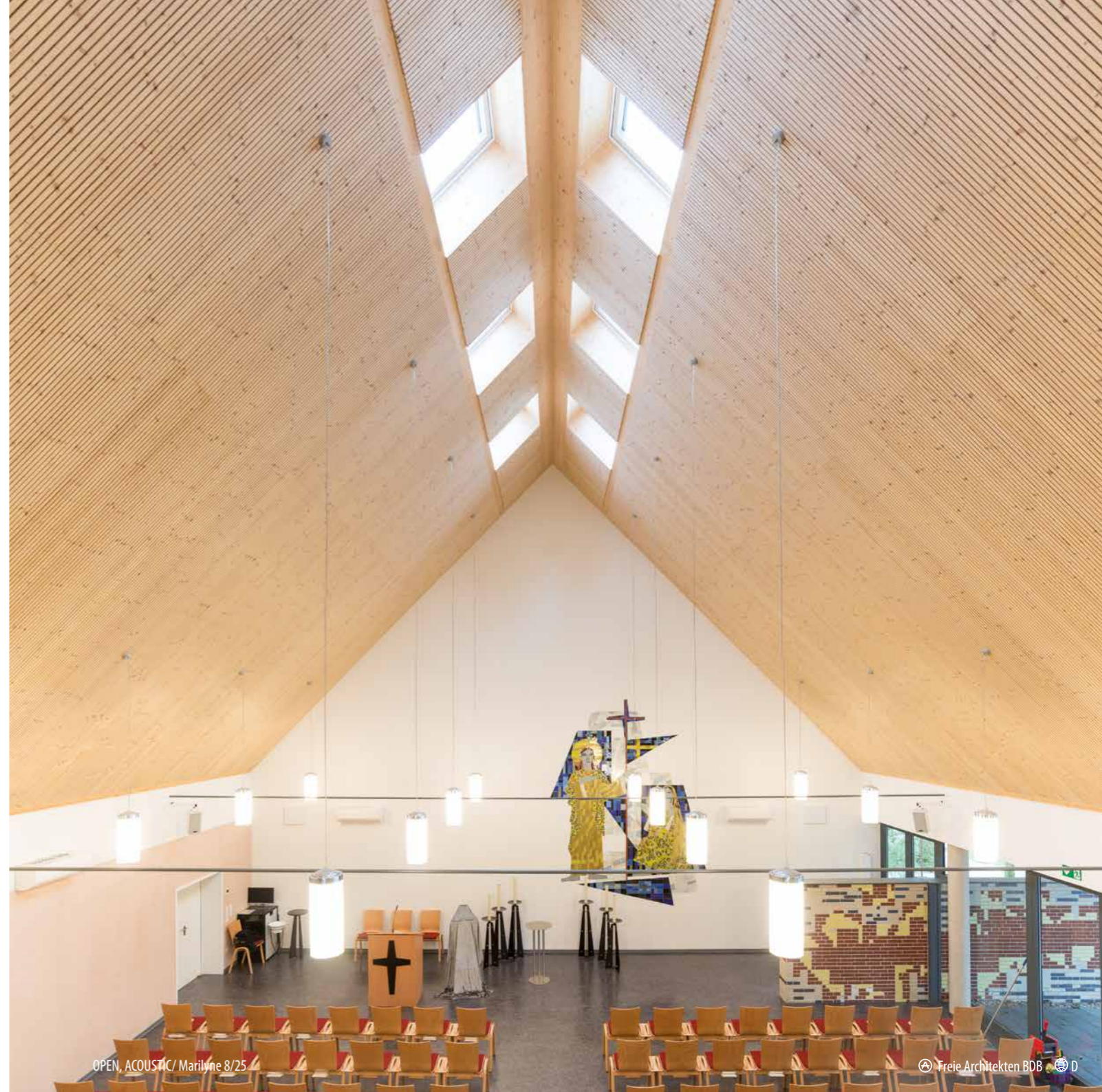
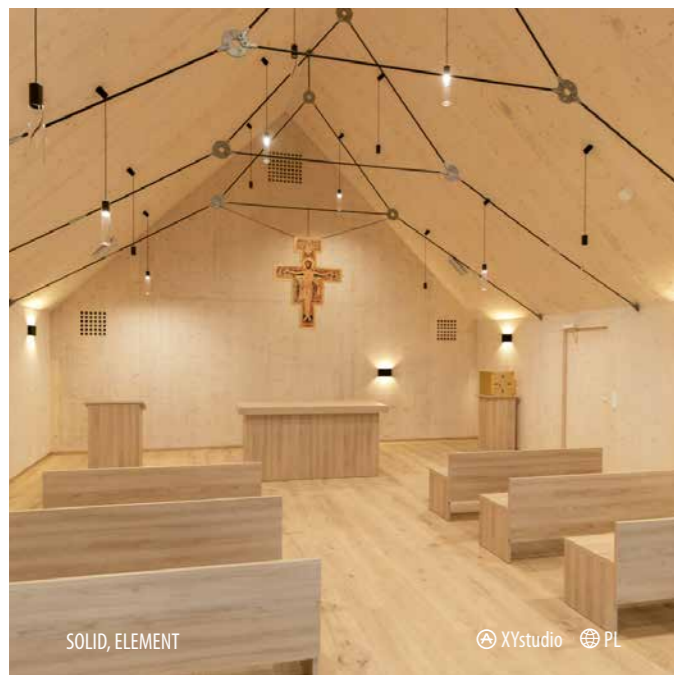
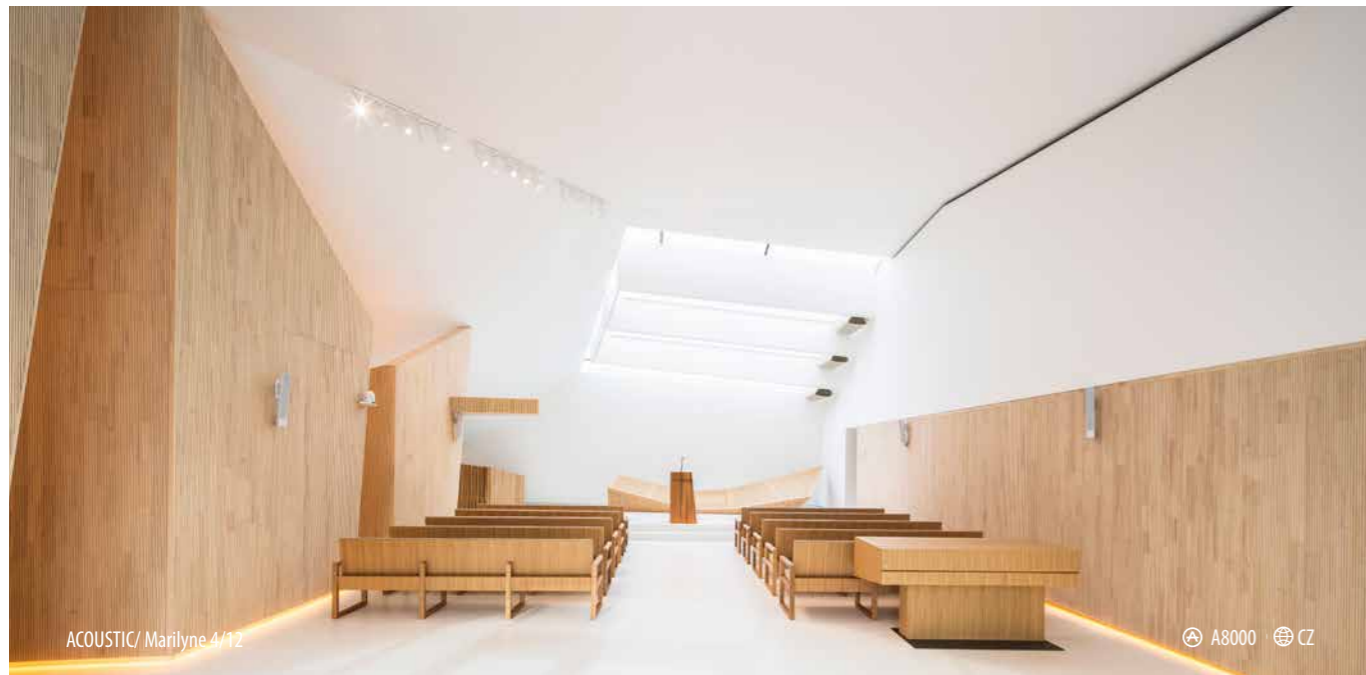
SWP

UK



ACOUSTIC / Marilynne 8/25

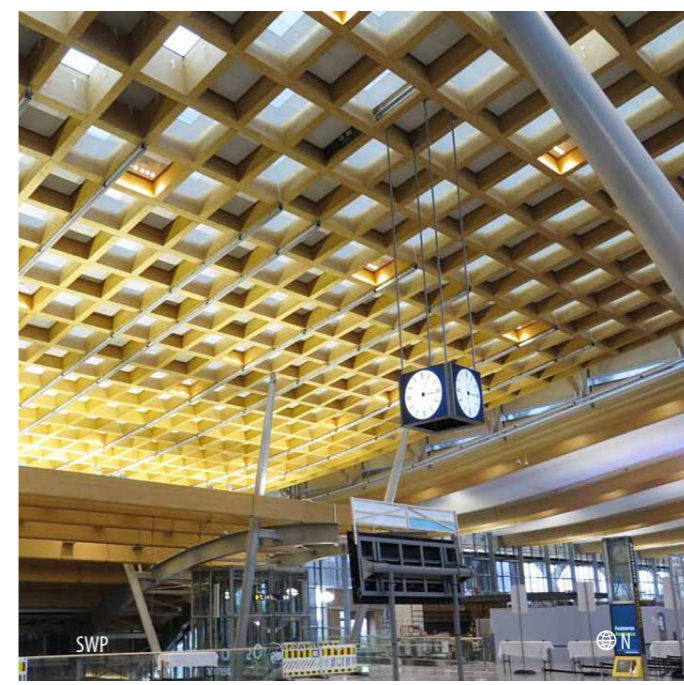
GEBOL AT





ELEMENT

SJB Kempter Fitze AG / Kuratle & Jaeger CH



SWP

CH



ELEMENT

Leuzinger Architektur AG CH



FACADE

AGROP NOVA a.s. CZ



SWP

Ⓜ Powerhouse Company & De Zwarte Hond 🌐 NL



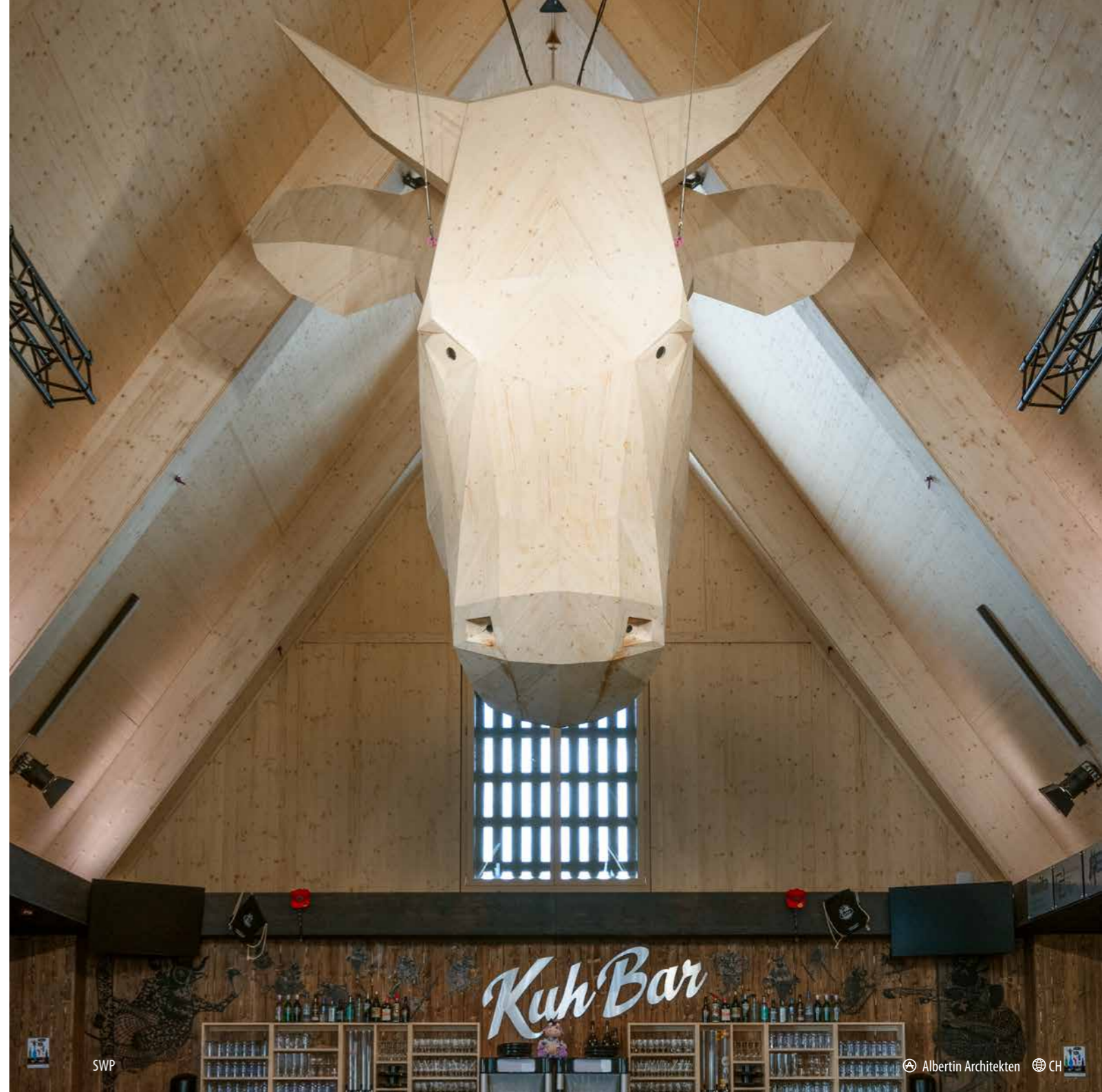
SWP

Ⓜ Powerhouse Company & De Zwarte Hond 🌐 NL



SOLID, ELEMENT, ACOUSTIC

Ⓜ Nicola Spinetto 🌐 FR



SWP

Ⓜ Albertin Architekten 🌐 CH

We reshape wood with modern design, craft it with meticulous care, treat it with respect and put it in its rightful place in architecture. With deep gratitude, we thank investors, architects, and partners for their trust and collaboration on projects around the world. Our thanks also go to the photographers who preserve the unique beauty of our designs through their lenses. For NOVATOP, it is a true honor and privilege to be part of these exceptional projects. We sincerely thank all who share this journey with us.



Jiří Oslizlo Jr. (COO), Jiří Oslizlo (CEO), Radek Oslizlo (CTO)

Our Czech company, AGROP NOVA a.s., continues the woodworking tradition established in 1865 in Plumlov by the Liechtenstein family. We began the production of three-layer boards in 1992, and since 2001 we have been operating as a family-owned business. Exceptional craftsmanship has been, is, and will always remain our highest priority.

